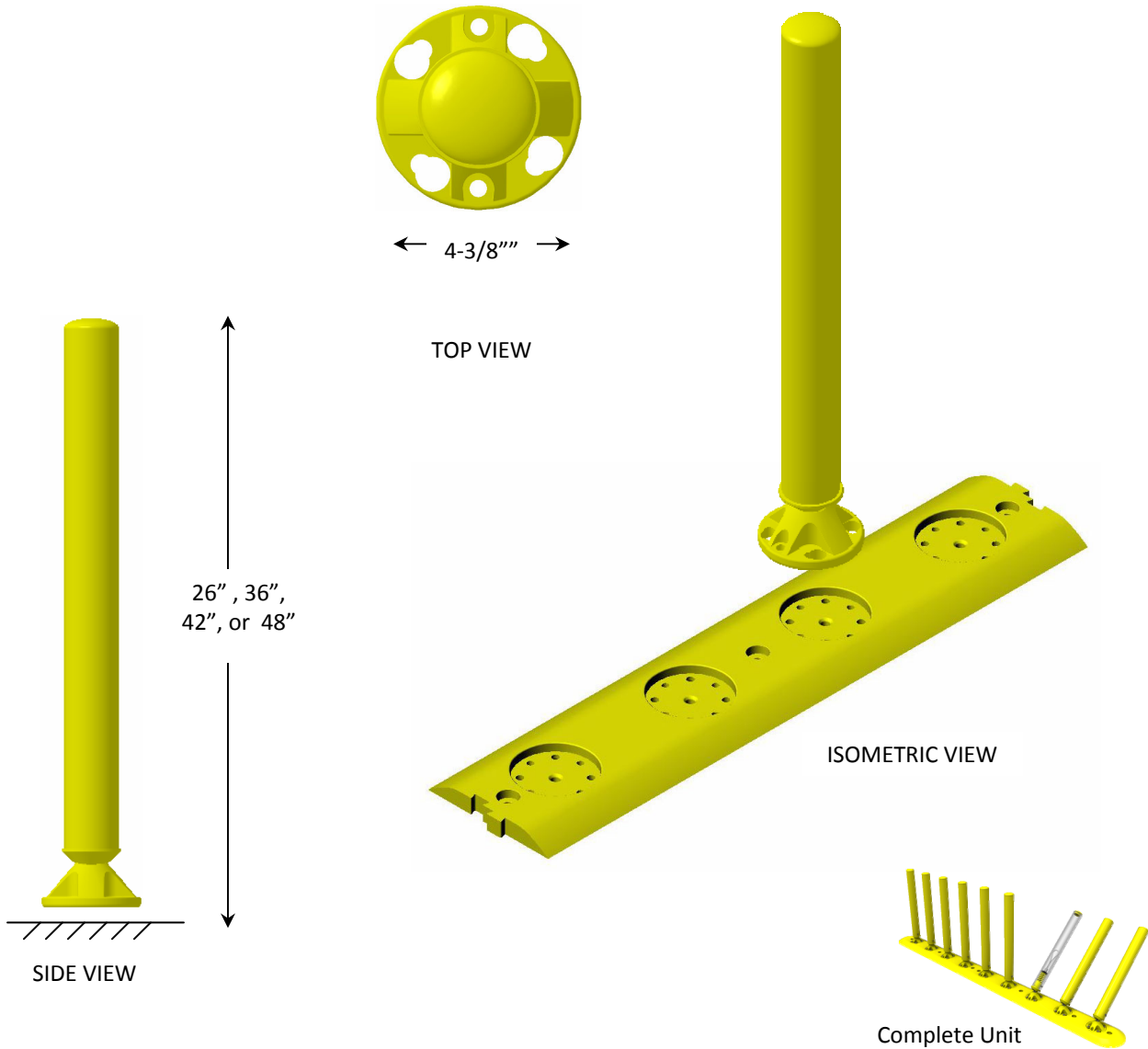


# Sentinel™ Between Car Barrier Post



**SPECIFICATIONS**

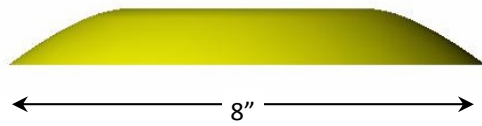
- Installation to be completed in accordance with manufacturer’s recommendations.
- Comprised of a proprietary blend of materials that satisfy the mechanical, cosmetic, & fire retardant requirements of metropolitan transit authorities.

**RECOMMENDED USES**

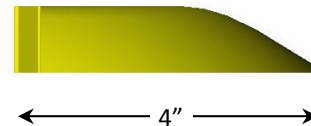
- Between Car Barrier to guide the sight impaired away from between car gap and toward doors.
- Raised platforms with consistent train stopping points.

# Sentinel™ Between Car Barrier

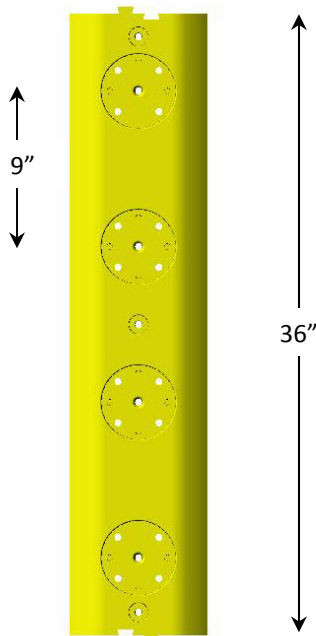
## Curb and End Cap



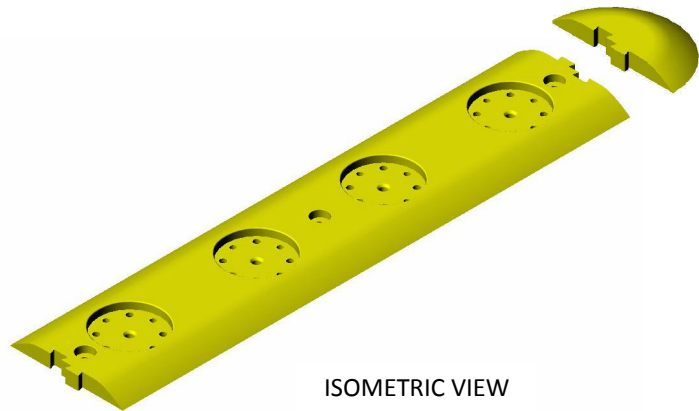
FRONT VIEW



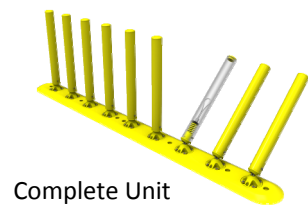
SIDE VIEW



TOP VIEW



ISOMETRIC VIEW



Complete Unit

### SPECIFICATIONS

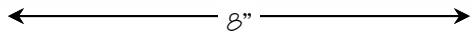
- Installation to be completed in accordance with manufacturer's recommendations.
- Comprised of a proprietary blend of materials that satisfy the mechanical, cosmetic, & fire retardant requirements of metropolitan transit authorities.

### RECOMMENDED USES

- Between Car Barrier to guide the sight impaired away from between car gap and toward doors.
- Raised platforms with consistent train stopping points.

# Sentinel™ Between Car Barrier

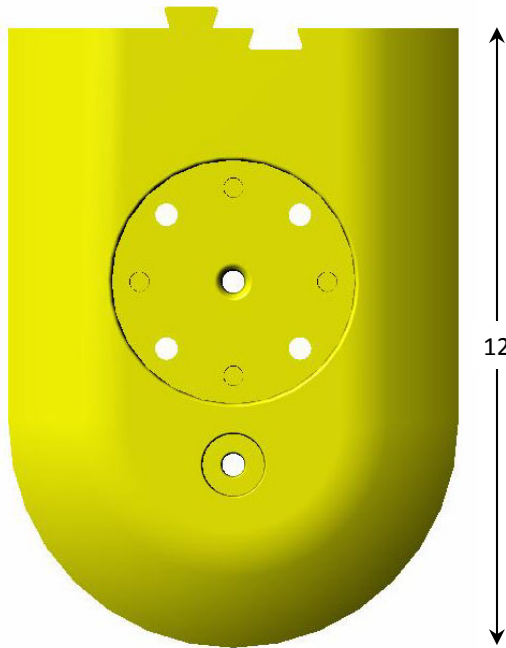
## Large End Cap



FRONT VIEW



SIDE VIEW

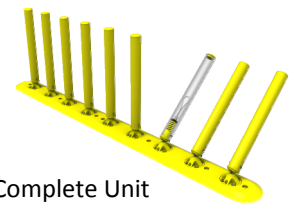


12

TOP VIEW



ISOMETRIC VIEW



Complete Unit

### SPECIFICATIONS

- Installation to be completed in accordance with manufacturer's recommendations.
- Comprised of a proprietary blend of materials that satisfy the mechanical, cosmetic, & fire retardant requirements of metropolitan transit authorities.

### RECOMMENDED USES

- Between Car Barrier to guide the sight impaired away from between car gap and toward doors.
- Raised platforms with consistent train stopping points.