

|               |             |           |
|---------------|-------------|-----------|
| DATE: 2-25-16 | PROJECT NO. | SHEET NO. |
|               |             | 3         |

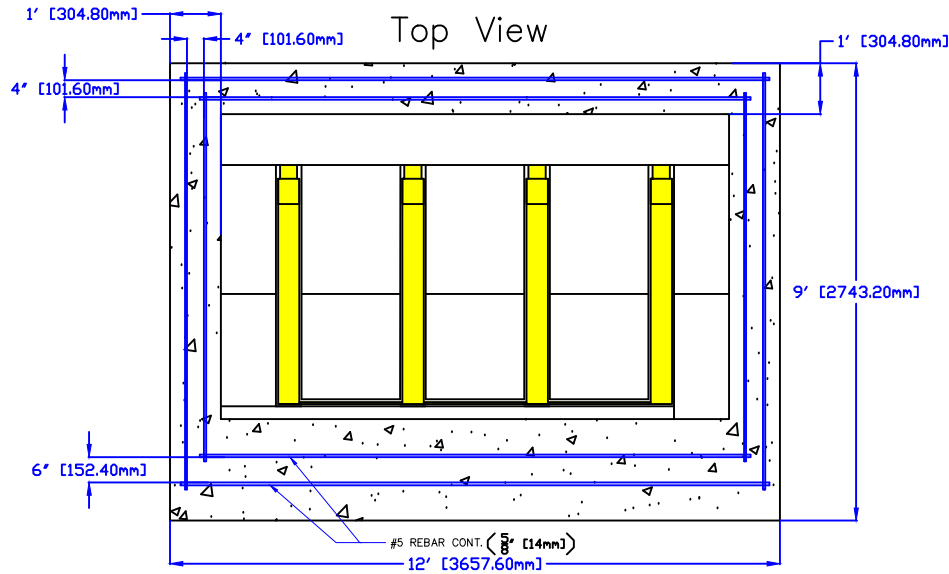
PROJECT NAME: OEM Typical Drawings  
 SHEET: ELEVATION RSS2000V  
 TITLE: SAMPLE DRAWINGS

RSSI BARRIERS, LLC  
 6630 HWY. 22  
 PANAMA CITY, FL. 32404  
 (850)871-9300

**RSSI**  
 RSSI BARRIERS, LLC  
 866.249.1029  
 WWW.RSSI.COM

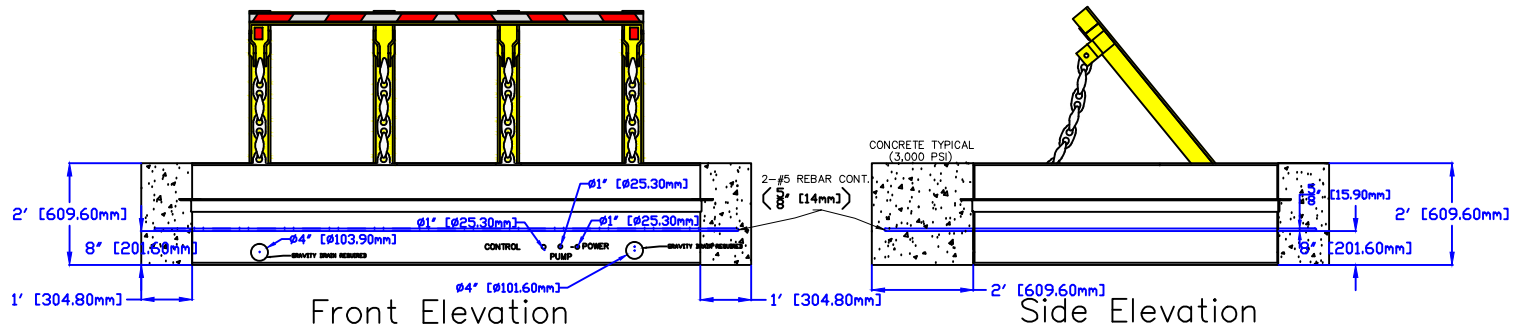
| REV. | DESCRIPTION | DATE |
|------|-------------|------|
|      |             |      |
|      |             |      |
|      |             |      |
|      |             |      |
|      |             |      |
|      |             |      |
|      |             |      |
|      |             |      |
|      |             |      |





**RSS-2000 Vehicle Barrier Installation Notes:**

- Excavate 9'(2,743.2-mm) X 12'(3,657.6-mm) X 2' (609.6-mm) pit
- Compact Soil to 95% or per local requirements
- Position barrier in excavated area
- Connect Natural Drains (REQUIRED)
- Connect Conduit Connections (Power, Controls and Sump pump)
- Position #5 (14-mm) rebar (approx. 100 feet(33.48-m))
- Pour approx. 4 yards concrete (3,000 PSI minimum)
- Set vehicle barrier (recommended) 1/2" or 22-mm above existing roadway then taper concrete for a smooth transition.
- Barrier Weight 6,720 pounds (3,048.14-kg) , with heat 7,620 pounds (3,456.37-kg)

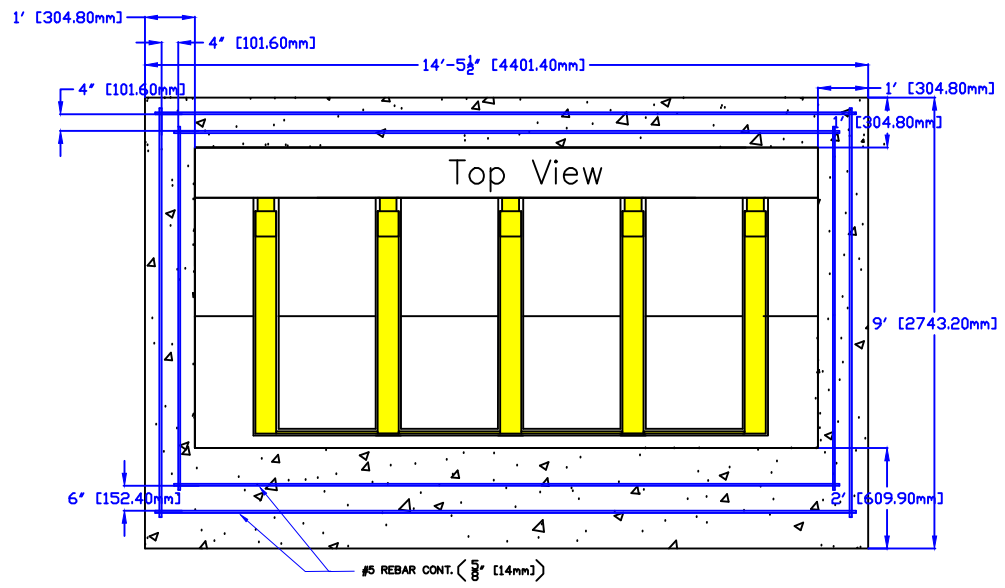


PROJECT NAME: OEM Typical Drawings  
 SHEET: FOUNDATION RSS2000  
 TITLE: SAMPLE DRAWINGS

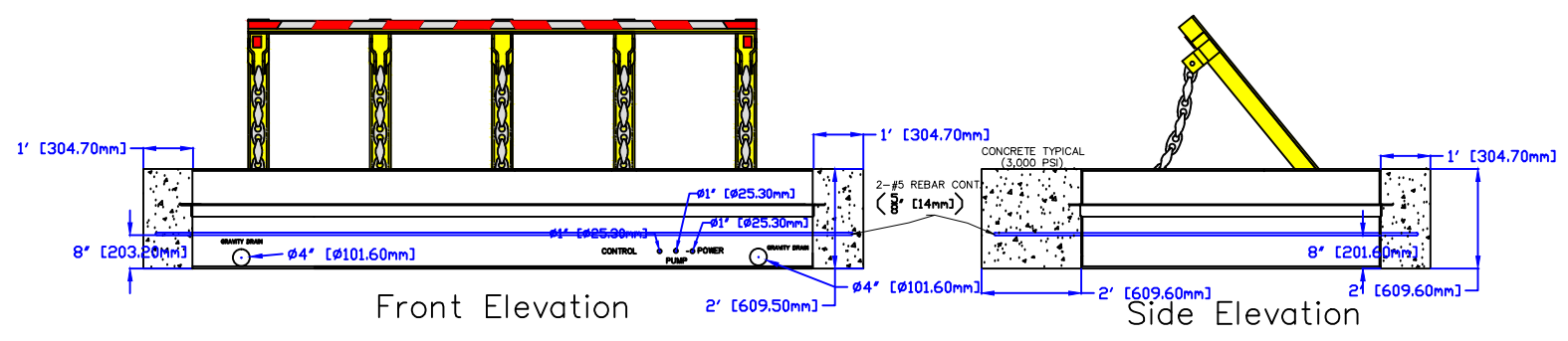
RSSI BARRIERS, LLC  
 6630 HWY. 22  
 PANAMA CITY, FL. 32404  
 (850)871-9300



| REV. | DESCRIPTION | DATE |
|------|-------------|------|
|      |             |      |
|      |             |      |
|      |             |      |
|      |             |      |



- RSS-2000V Vehicle Barrier Installation Notes:**
- Excavate 9'(2,743.2-mm) X 14.5'(4,419.6-mm) X 2' (609.6-mm) pit
  - Compact Soil to 95% or per local requirements
  - Position barrier in excavated area
  - Connect Natural Drains (REQUIRED)
  - Connect Conduit Connections (Power, Controls and Sump pump)
  - Position #5 (14-mm) rebar (approx. 110 feet(33.53-m))
  - Pour approx. 5 yards concrete (3,000 PSI minimum)
  - Set vehicle barrier (recommended) 1/2" or 22-mm above existing roadway then taper concrete for a smooth transition.
  - Barrier Weight 8,260 pounds (3,746.65-kg) , with heat 9,385 pounds (4,256.96-kg)

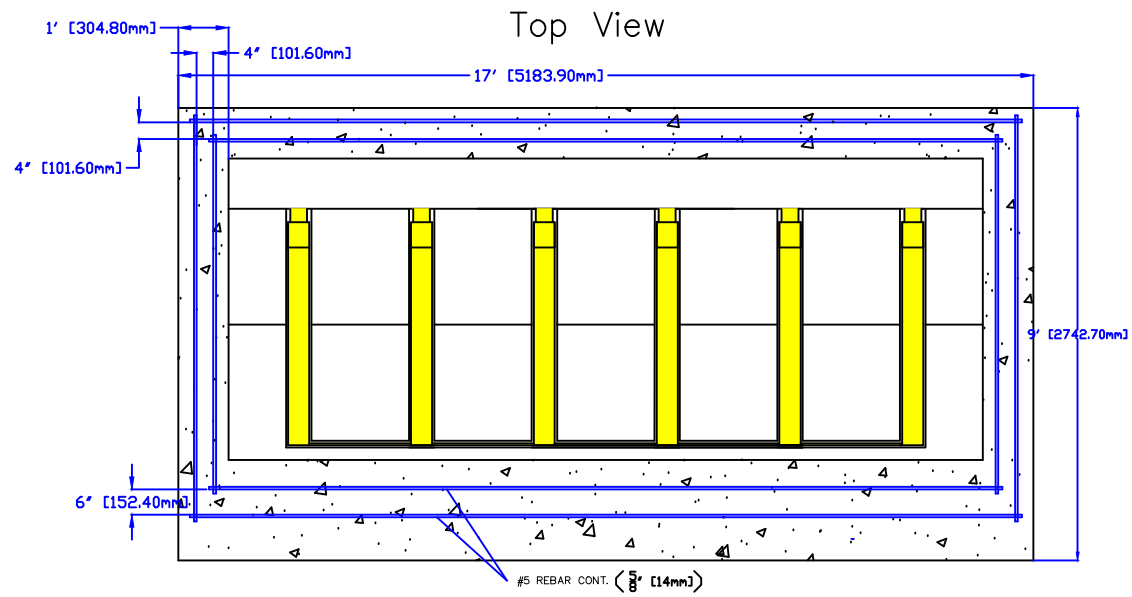


PROJECT NAME: OEM Typical Drawings  
 SHEET: FOUNDATION RSS2000V  
 TITLE: SAMPLE DRAWINGS

RSSI BARRIERS, LLC  
 6530 HWY. 22  
 PANAMA CITY, FL. 32404  
 (850)871-9300

RSSI BARRIERS, LLC  
 866.249.1029  
 WWW.RSSI.COM

| REV. | DESCRIPTION | DATE |
|------|-------------|------|
|      |             |      |
|      |             |      |
|      |             |      |
|      |             |      |
|      |             |      |
|      |             |      |
|      |             |      |
|      |             |      |
|      |             |      |

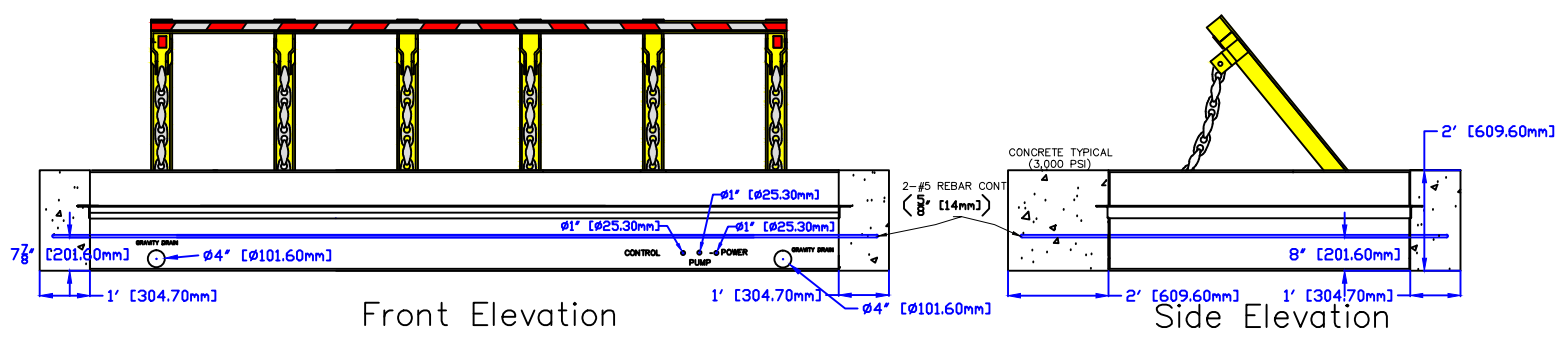


- RSS-2000VI Vehicle Barrier Installation Notes:**
- Excavate 9' (2,743.2-mm) X 17' (5,181.6-mm) X 2' (609.6-mm) pit
  - Compact Soil to 95% or per local requirements
  - Position barrier in excavated area
  - Connect Natural Drains (REQUIRED)
  - Connect Conduit Connections (Power, Controls and Sump pump)
  - Position #5 (14-mm) rebar (approx. 120 feet (33.58-m))
  - Pour approx. 5.5 cu. yards concrete (3,000 PSI minimum)
  - Set vehicle barrier (recommended) 1/2" or 22-mm above existing roadway then taper concrete for a smooth transition.
  - Barrier Weight 9,800 pounds (4,445.21-kg), with heat 11,150 pounds (5,057.55-kg)

PROJECT NAME: OEM Typical Drawings  
 SHEET: FOUNDATION RSS2000VI  
 TITLE: SAMPLE DRAWINGS

RSSI BARRIERS, LLC  
 6630 HWY. 22  
 PANAMA CITY, FL. 32404  
 (850)871-9300

**RSSI**  
 RSSI BARRIERS, LLC  
 866.249.1029  
 WWW.RSSI.COM



| REV. | DESCRIPTION | DATE |
|------|-------------|------|
|      |             |      |
|      |             |      |
|      |             |      |
|      |             |      |
|      |             |      |
|      |             |      |
|      |             |      |
|      |             |      |
|      |             |      |












# WIRE & CONDUIT LEGEND

DWG BY: MMS  
 DATE: 2-5-16  
 PROJECT NO.  
 SHEET NO. 12

PROJECT NAME: OEM Typical Drawings  
 SHEET: WIRE AND CONDUIT LEGEND  
 TITLE: SAMPLE DRAWINGS

RSSI BARRIERS, LLC  
 6530 HWY. 22  
 PANAMA CITY, FL. 32404  
 (850)871-9300  
  
 RSSI BARRIERS, LLC  
 866.249.1029  
 WWW.RSSI.COM

| REV. | DESCRIPTION | DATE |
|------|-------------|------|
|      |             |      |
|      |             |      |
|      |             |      |
|      |             |      |
|      |             |      |
|      |             |      |
|      |             |      |
|      |             |      |
|      |             |      |
|      |             |      |

| CONDUIT SCHEDULE |                       |                        |              |  |  |
|------------------|-----------------------|------------------------|--------------|--|--|
| CONDUIT ID       | FROM                  | TO                     | CONDUIT SIZE | WIRE SPECS   | PURPOSE                                  |
| C-0              | MAIN POWER SOURCE     | BATTERY BACKUP PANEL   | BY INSTALLER | BY INSTALLER L1, L2, N, GND                        | MAIN POWER                               |
| C-1              | BATTERY BACKUP PANEL  | BARRIER CONTROL PANEL  | 1"           | 4-#10 THHN<br>1-#10 GND                            | SYSTEM POWER                             |
| C-2              | BATTERY BACKUP PANEL  | BARRIER CONTROL PANEL  | 1"           | 2-#16 THHN   | BATTERY BACKUP STATUS                    |
| C-3              | BARRIER CONTROL PANEL | BARRIER POWER J-BOX    | 1"           | 4-#10 THHN<br>2-#10 GND<br>2-#14 THHN<br>1-#14 GND | SERVO DRIVE<br>BARRIER HEAT<br>SUMP PUMP |
| C-4              | BARRIER CONTROL PANEL | BARRIER CONTROL J-BOX  | 1"           | 1-CAT5e CABLE<br>2-#14THHN                         | COMMUNICATIONS<br>WARNING LED'S          |
| C-5              | BARRIER CONTROL PANEL | SAFETY LOOPS           | 1"           | TYPE XPLE<br>LOOP WIRE                             | SAFETY LOOPS                             |
| C-6              | BARRIER CONTROL PANEL | TRAFFIC LIGHTS (24VDC) | 1"           | 3-#14 THHN   | TRAFFIC LIGHTS                           |
| C-7              | BARRIER CONTROL PANEL | OPERATOR STATION       | 1"           | TBD  | OPERATOR CONTROLS                        |

ALL FIELD WIRING TO BE THHN STRANDED CONDUCTORS.  
 ALL CAT5E CABLE IN CONDUIT TO BE TYPE CMXF.

NOTE: IT IS THE RESPONSIBILITY OF THE INSTALLING CONTRACTOR TO ENGINEER ALL WIRING TO MEET THE GOVERNING WIRE SIZE, POWER REQUIREMENTS AND LOCAL ELECTRICAL CODES.. THIS WIRE SIZE CHART IS BASED ON A MAXIMUM DISTANCE OF 100' FROM THE BCP TO THE BARRIER.

