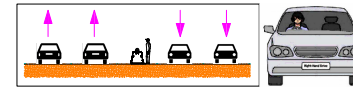


**Right Hand Drive (RHD) road version\***  
 Buffer with vertical locking, always on Short Arm = Arm #1  
 Maximum opening angle = 20°  
 Drawn: Standard VEVA-Duo (4\*+5) configuration

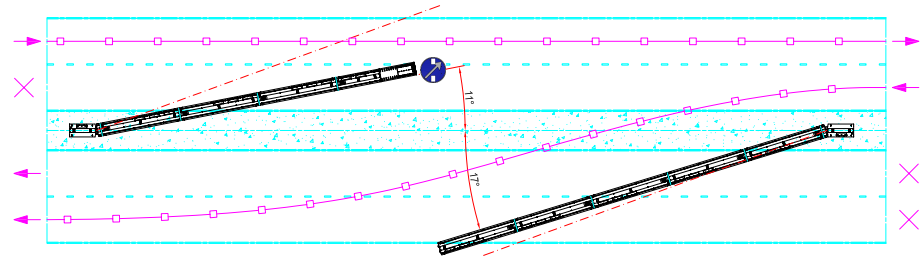


- \*Countries with Right Hand Drive:**
- Australia
  - New Zealand
  - United Kingdom
  - Singapore
  - Thailand
  - South Africa
  - Malta
  - Malaysia
  - Kenya
  - Japan
  - Jamaica
  - Isle of Man
  - Ireland
  - India
  - Hong Kong
  - Cyprus
  - Channel Islands
  - Caribbean Islands

**VEVA Arm #1**  
 Buffer element: vertical locking  
 Module ID: A,0 - A,1 etc.

**Situation: RHD-01**

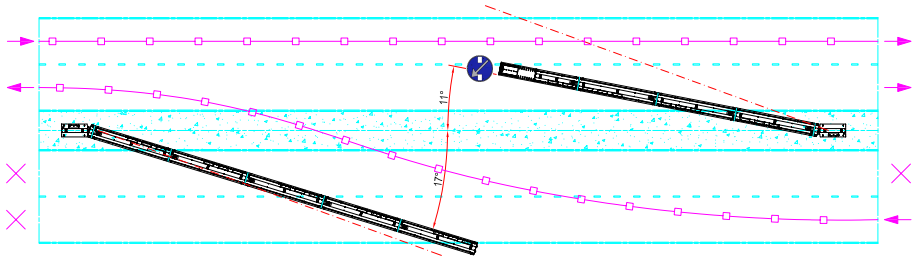
**VEVA Arm #2**  
 End element: horizontal locking  
 Module ID: B,0 - B,1 etc.



**VEVA Arm #2**  
 End element: horizontal locking  
 Module ID: D,0 - D,1 etc.

**Situation: RHD-02**

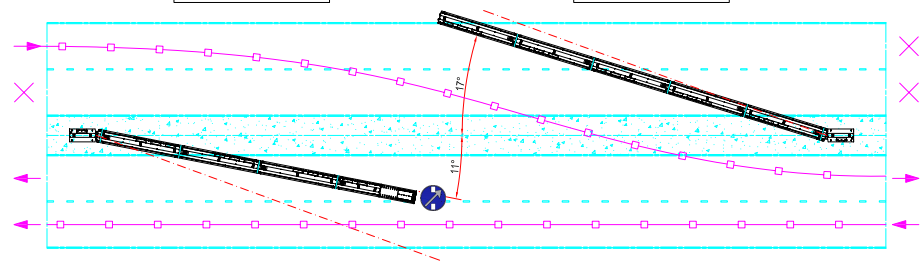
**VEVA Arm #1**  
 Buffer element: vertical locking  
 Module ID: C,0 - C,1 etc.



**VEVA Arm #1**  
 Buffer element: vertical locking  
 Module ID: E,0 - E,1 etc.

**Situation: RHD-03**

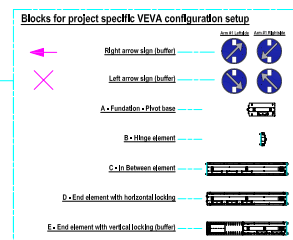
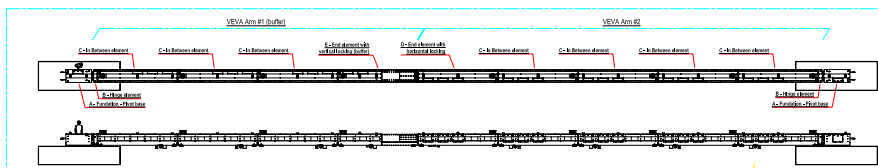
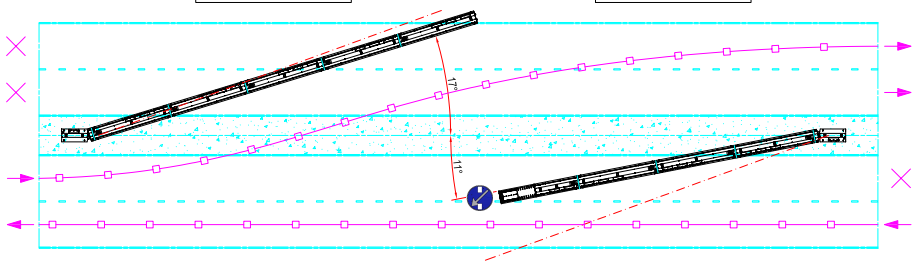
**VEVA Arm #2**  
 End element: horizontal locking  
 Module ID: F,0 - F,1 etc.



**VEVA Arm #2**  
 End element: horizontal locking  
 Module ID: H,0 - H,1 etc.

**Situation: RHD-04**

**VEVA Arm #1**  
 Buffer element: vertical locking  
 Module ID: G,0 - G,1 etc.



Version: **Standard Product**

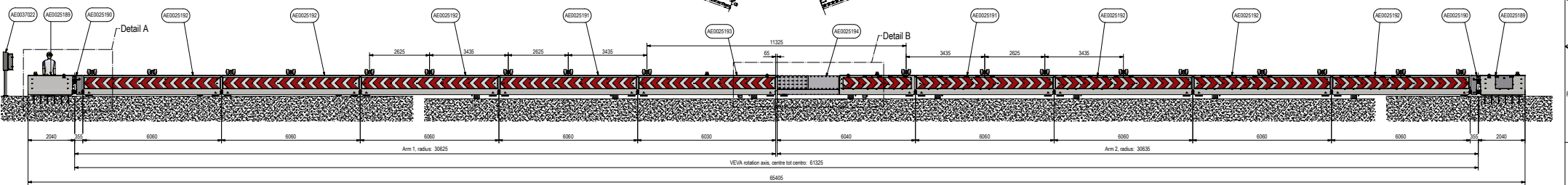
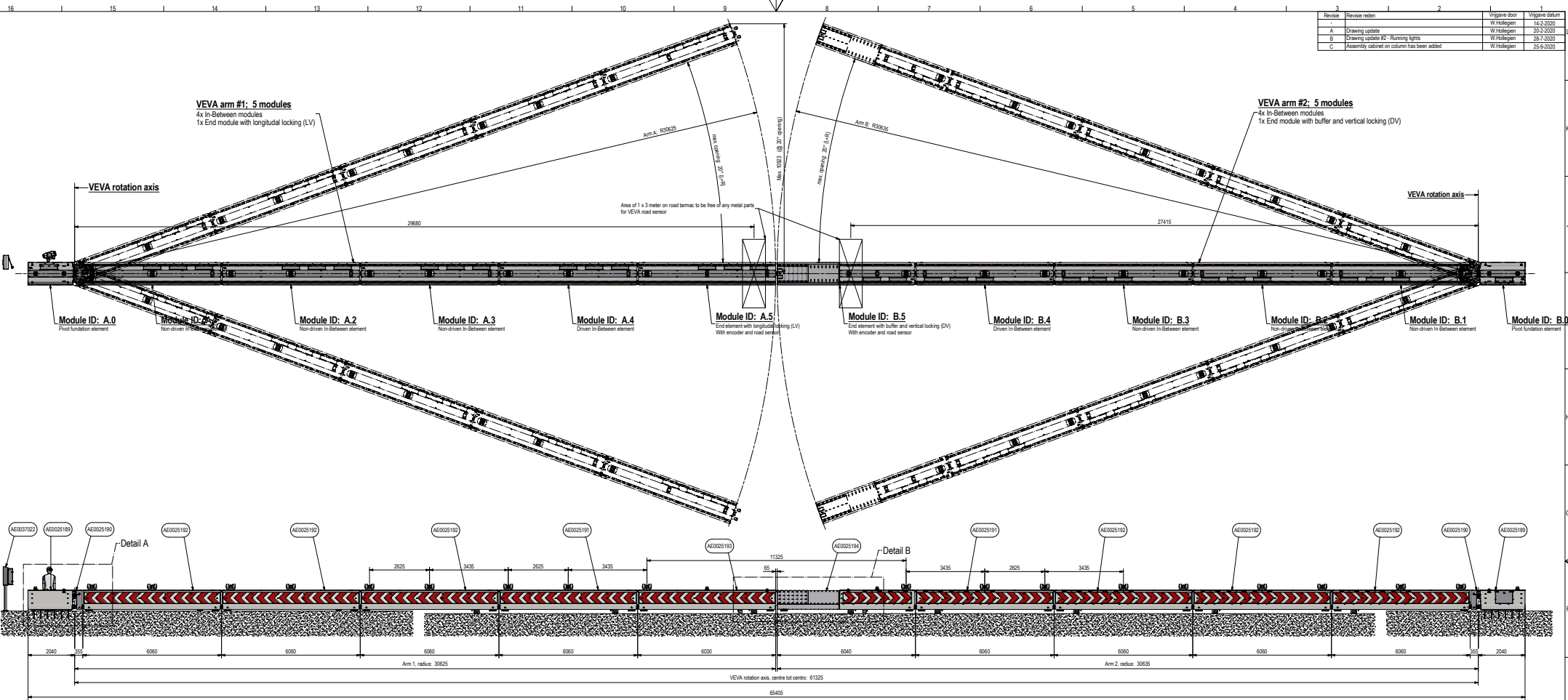
School:	1:200	A2	Contractor:	SPIE Smart City
Client:	R.S.	03-03-2020	Project:	
Drawn:			Checked:	

Standard VEVA Duo (4\*+5) road configurations  
 For countries with 'Right Hand Drive' (RHD)

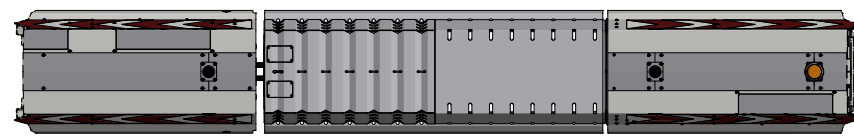
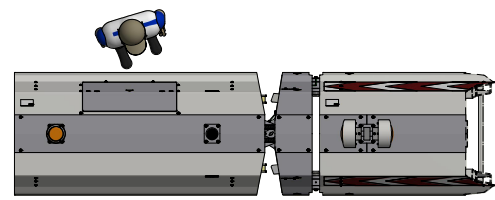
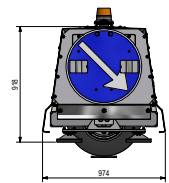
**SPIE** SPIE Nederland B.V.  
 Smart city

Document number:  
 AE0026991

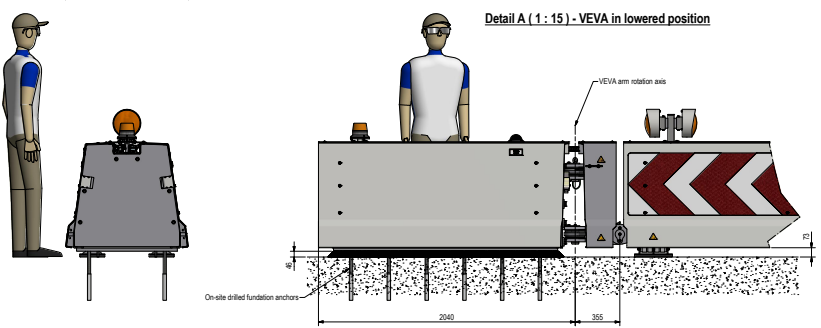
Revisie	Revisie reden	Wijziging door	Wijziging datum
A	Drawing update	W.Hollegem	14-2-2020
B	Drawing update #2: Running lights	W.Hollegem	20-2-2020
C	Assembly cabinet on column has been added	W.Hollegem	25-9-2020



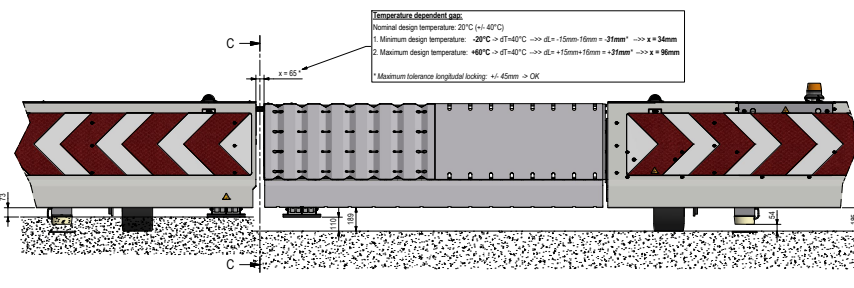
**C-C (1 : 15) - Frontside buffer**



**Detail A (1 : 15) - VEVA in lowered position**



**Detail B (1 : 15) - VEVA in lowered/ lifted position**



**VEVA 3; Module ID coding (for E-VEVA-Dual 60m)**

- VEVA 1:** Arm #1: A.0 - A.1 - A.2 - A.3 - A.4 - A.5  
Arm #2: B.0 - B.1 - B.2 - B.3 - B.4 - B.5
- VEVA 2:** Arm #1: C.0 - C.1 - C.2 - C.3 - C.4 - C.5  
Arm #2: D.0 - D.1 - D.2 - D.3 - D.4 - D.5
- VEVA 3:** Arm #1: E.0 - E.1 - E.2 - E.3 - E.4 - E.5  
Arm #2: F.0 - F.1 - F.2 - F.3 - F.4 - F.5
- VEVA 4:** Arm #1: G.0 - G.1 - G.2 - G.3 - G.4 - G.5  
Arm #2: H.0 - H.1 - H.2 - H.3 - H.4 - H.5

4x VEVA dual arm 60 meter (2x 5), electrical lifting (E-VEVA-Dual 60m (5+5))  
Project nr.: 01045.20.0716  
Project: Storebaelt brug, Denmark  
Product code: E-VEVA-Dual 60m (5+5), in total 4x  
Maximum opening angle: 20°  
Nominal design temperature: 20°  
2x Driven In-Between modules  
1x End module with longitudinal locking (LV)  
1x End module with buffer and vertical locking (DV)  
All maintenance ladders on left side, seen from VEVA rotation axis

See 2D document AE0028124 for anchor positions VEVA

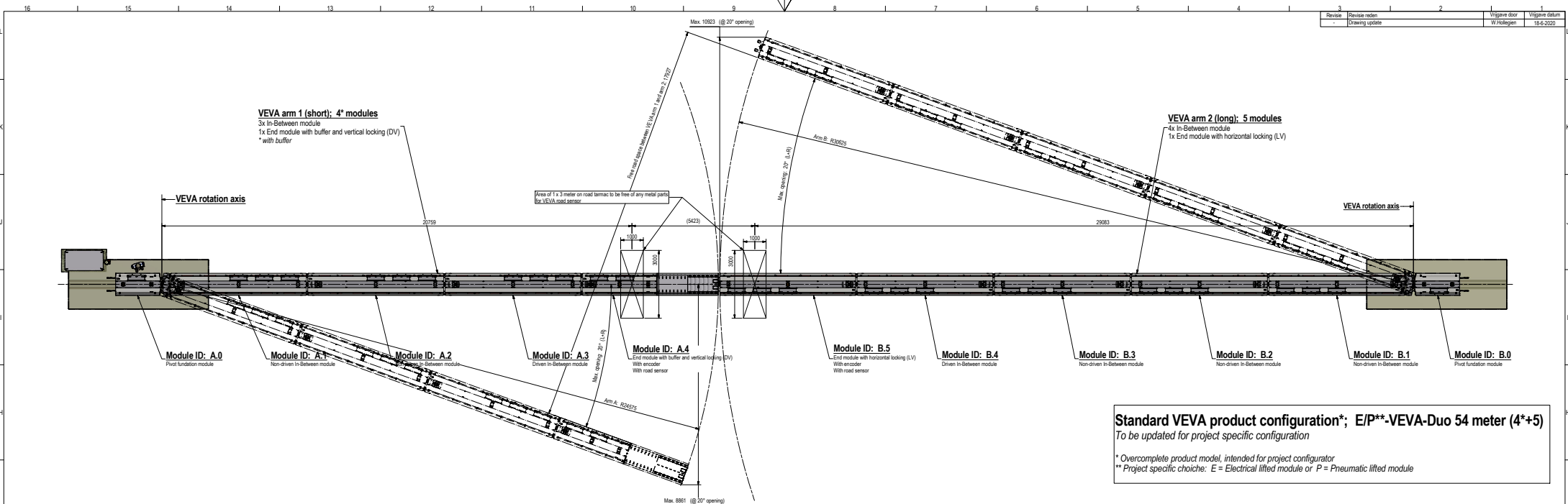
Item #	Material	Titel	Lengte	Materiaal	Massa
AE0037022	1	Assembly cabinet on column			47
AE0025194	1	Module E - End element with buffer DV			1540
AE0025193	1	Module D - End element with LV			2033
AE0025192	6	Module C - In-Between element - Non-driven			1931
AE0025191	2	Module C - In-Between element - Driven			1998
AE0025190	2	Module B - Hinge element (max. 20 degree)			199
AE0025189	2	Module A - Pivot function element			924

**SPiE Nederland**  
Smart city  
Voorburg, Wijk 1, Schoneville

Document status: **Released - Voor Productie**  
12-2-2020

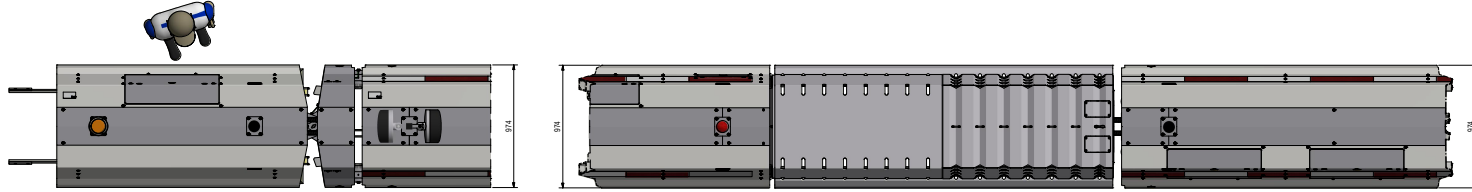
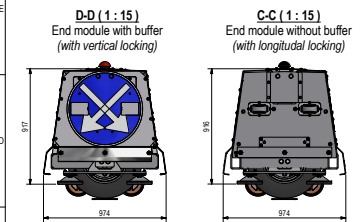
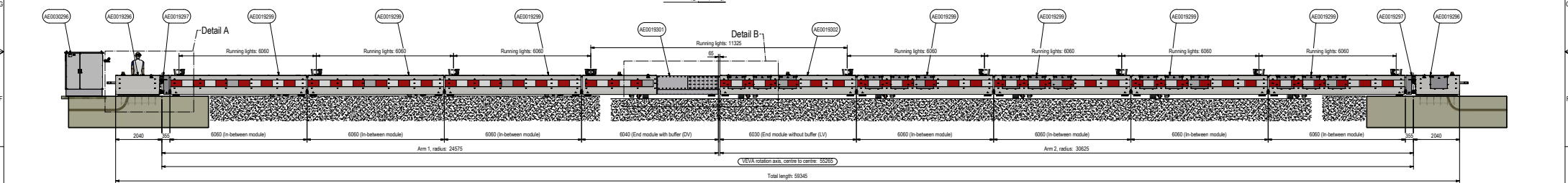
Project: E-VEVA-Dual 60m - Arm 1: 5 modules + Arm 2: 5 modules  
Item: AE0025197 C

E-VEVA-Dual 60m (5+5) - Storebaelt brug	21415 kg	AE0025197 C
---	----------	-------------



**Standard VEVA product configuration\*; E/P\*\*-VEVA-Duo 54 meter (4\*+5)**  
 To be updated for project specific configuration

\* Overcomplete product model, intended for project configurator  
 \*\* Project specific choiche: E = Electrical lifted module or P = Pneumatic lifted module



**VEVA 3; Module ID coding**

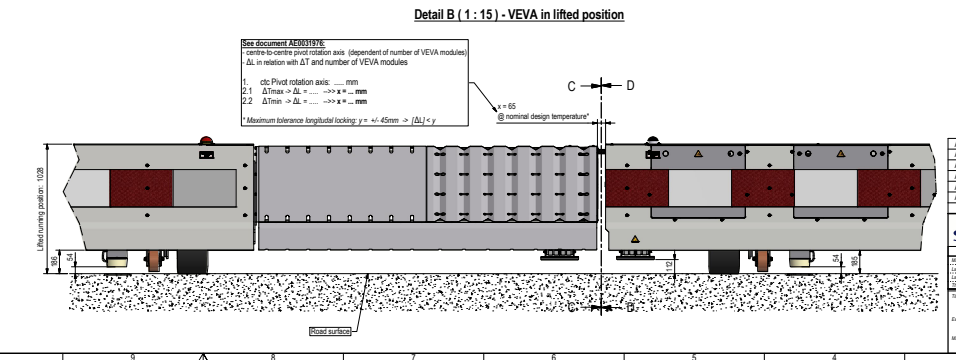
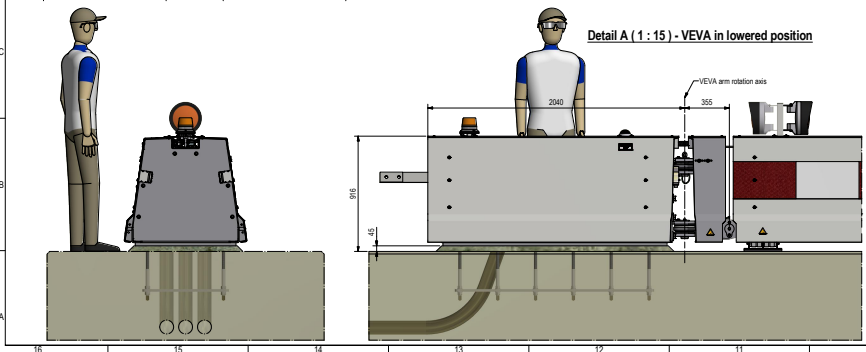
**VEVA #1:** Arm 1: A.0 - A.1 - A.2 - A.3 - A.4 - A.C\*\*  
 Arm 2: B.0 - B.1 - B.2 - B.3 - B.4 - B.5

**VEVA #2:** Arm 1: C.0 - C.1 - C.2 - C.3 - C.4\* - C.C\*\*  
 Arm 2: D.0 - D.1 - D.2 - D.3 - D.4 - D.5

**VEVA #3:** Arm 1: E.0 - E.1 - E.2 - E.3 - E.4\* - E.C\*\*  
 Arm 2: F.0 - F.1 - F.2 - F.3 - F.4 - F.5

**VEVA #4:** Arm 1: G.0 - G.1 - G.2 - G.3 - G.4\* - G.C\*\*  
 Arm 2: H.0 - H.1 - H.2 - H.3 - H.4 - H.5

\* = End module with buffer and vertical locking (DV)  
 \*\* = Control Cabinet ID (1/C)



**See document AE0019316**  
 - centre-to-centre pivot rotation axis (dependent of number of VEVA modules)  
 - ΔL in relation with ΔT and number of VEVA modules

1: c/c Pivot rotation axis: ... mm  
 2.1: ΔLmax → ΔL ... → x = ... mm  
 2.2: ΔLmin → ΔL ... → x = ... mm  
 \* Maximum tolerance longitudinal locking: y = ± 45mm → (ΔL) < y

**VEVA project:**  
 Project nr.: .....  
 Project name: .....  
 Contractor: .....  
 Product code: [example: E/P-VEVA-Duo 54m (4\*+5)]

**VEVA product:**  
 Module length: 6 meter  
 Maximum good opening angle: 20° (Left and Right)  
 Nominal design temperature: 20°  
 Netto lifting height: approx. 100mm  
 All maintenance hatches on left side, seen from rotation axis fundation module

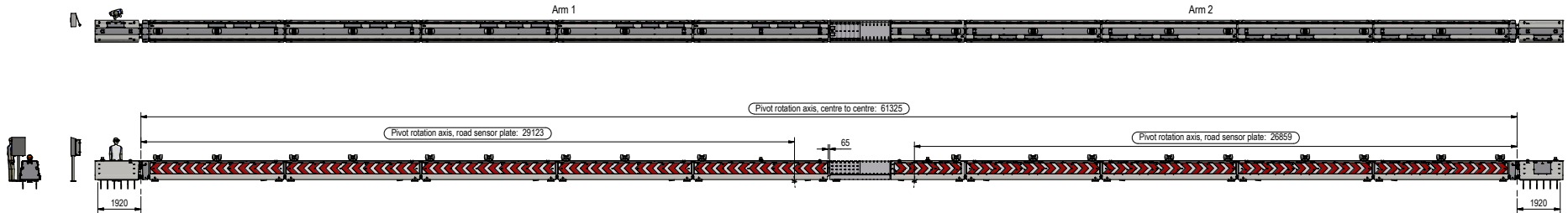
Item #	Material	Unit	Length	Material	Mass
AE0019296	1	Module 5 - Control Cabinet VEVA			760
AE0019301	1	Module 4-2 - End module: buffer w. locking (DV)			2280
AE0019302	1	Module 4-1 - End module with locking (LV)			3070
AE0019297	7	Module 3 - In-Between module			3192
AE0019297	2	Module 2 - Hinge module			195
AE0019296	2	Module 1-1 - Fundation - Pivot base			4320

**SPiE Nederland**  
 Smart city  
 R. Schoneville  
 Released - Voor Productie  
 ZS-2-2020

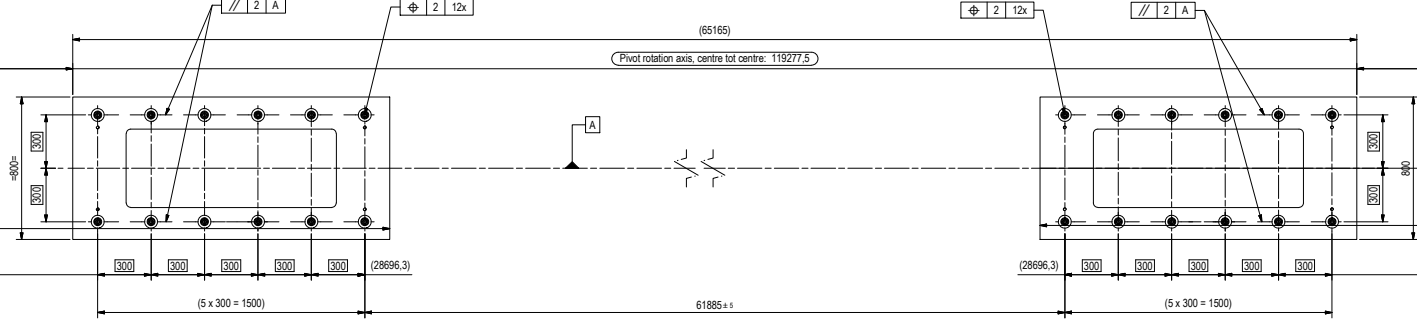
**1x E/P-VEVA-Duo 54 meter (4\*+5)**  
 \* VEVA arm with buffer  
 Mass: 115580 kg

**AE0026032**

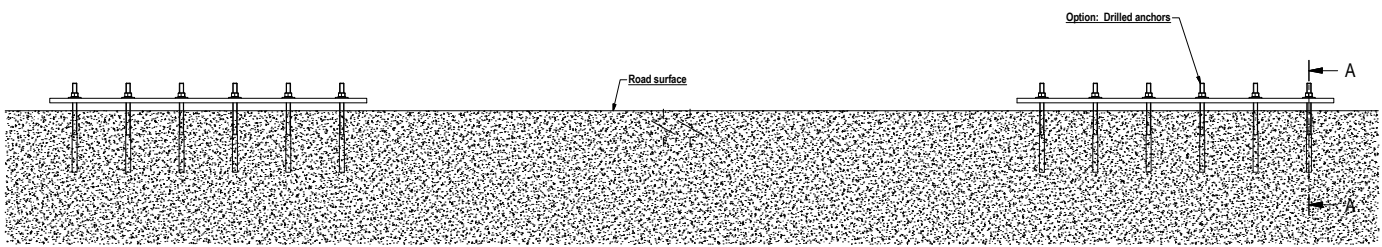
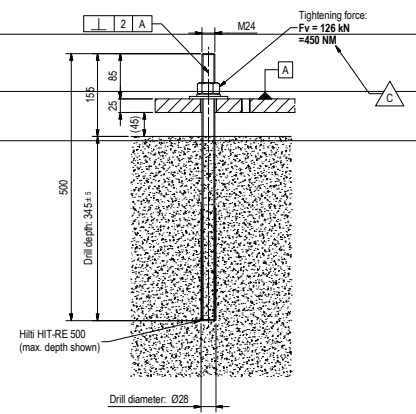
Revisie	Revisie reden	Vrijgave door	Vrijgave datum
-	-	W.Hollegien	28-2-2020
A	Drawing update	W.Hollegien	28-7-2020
B	Drawing update	W.Hollegien	25-9-2020
C	Drawing update	W.Hollegien	27-11-2020



**Top View with bottom plate Foundation module ( 1 : 15 )**



**A-A ( 1 : 5 )  
End situation with on-site drilled anchors  
(typical)**



<b>SPIE Nederland</b> Smart city Vestiging Wjfe / Siedrecht		Document status: <b>Released - Voor Productie</b>
Nieuw ontwerp Machinaal ontworpen/zakken: <b>nvt</b>		Datum: <b>28-2-2020</b>
Gepland: <b>R.Schonewille</b>		Formaat: <b>A1</b>
Nieuw ontwerp Machinaal ontworpen/zakken: <b>nvt</b>		Schaal: <b>1 : 15</b>
Extra omschrijving: <b>Mounting position Pivot foundation anchors</b>		Documentnummer (D): <b>AE0026724.idw</b>
Materiaal: <b>21415 kg</b>		Revisie: <b>AE0025197 C</b>