

REBLOC 100SF_8

Standard element



tested according to EN1317-1/2¹⁾

Application
Permanent system

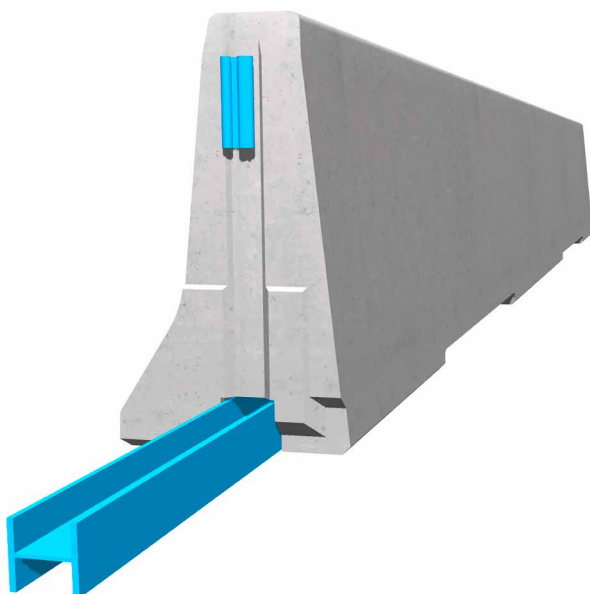
Installation
Free standing



Containment level **H4b** (covers H3, H2, H1, N1, T3, T2 and T1)
 Working width **W5** (covers W6, W7 and W8)
 Impact severity level **ASI B**

Product features

- Maximum breakthrough safety through highest containment level H4b
- Fully vandal proof due to integrated coupling
- Easy and quick installation



Permanent precast concrete vehicle restraint systems are used for long lasting protection on the central reservation and along the verge. Vehicles deviating from the road are retained or redirected and prevent a dangerous breakthrough onto the opposite carriageway. The highest containment level H4b offers best possible protection and even restrains an impact of a 38 t truck driving at 65 km/h (TB81 according to EN1317-2).

The integrated, innovative coupling does not contain any loose parts. This does not only enhance the safety, but also the installation speed. The easy installation, which does not depend on weather conditions, reduces the disruptions of the traffic flow.

Thanks to the interlocking construction, there are no loose parts, which prevent unauthorized removal of pieces and protects fully against vandalism.

¹⁾ based on a modification in accordance to EN 1317-5

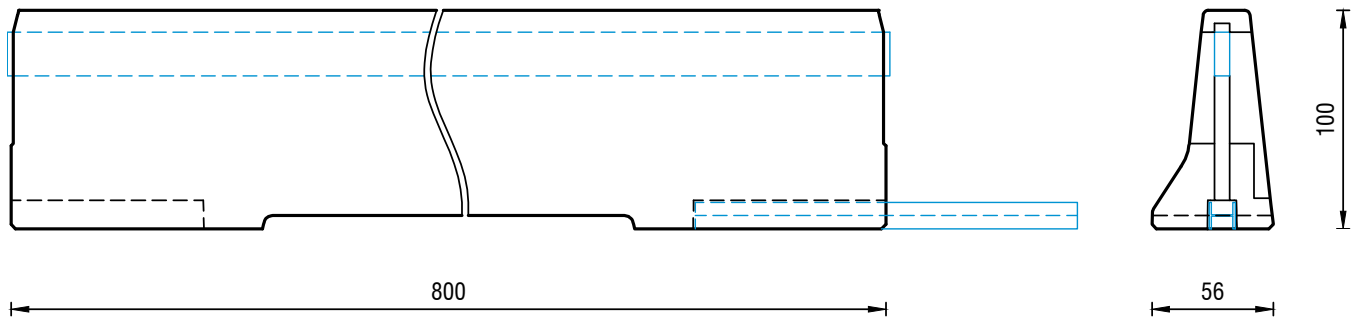
REBLOC 100SF_8

Standard element



tested according to EN1317-1/2¹⁾

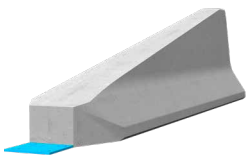
Technical data



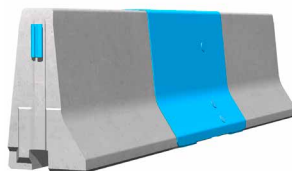
all dimensions in cm

Containment level	H4b
Working width	W5
Impact severity level	ASI B
Vehicle intrusion	VI8
Installation	free standing on asphalt/concrete
Terminal elements	required; REBLOC 100SF_4TR/L (4 x M24 adhesive anchors)
Dimensions L x W x H in cm	800 x 56 x 100 cm
Weight/element	6.000 kg
Elements/truck (24 t)	4 elements
Minimum installation length	96 m (not including terminal elements)
Curve radius	$r \geq 350$ m, smaller radii on request
Coupling/exposed steel parts	fully integrated, exposed parts hot-dip galvanized
CE-certification	✓

System element - combinable



Terminal element
REBLOC 100SF_4TR/L



Dilatation element
REBLOC 100SF_2.35EXM

¹⁾ based on a modification in accordance to EN 1317-5