

REBLOC 100_4

Standard element

Application
Permanent system

Installation
Free standing

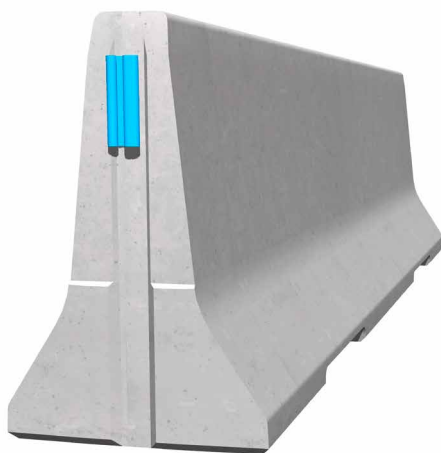
H2	W5
tested according to EN1317-1/2 ¹⁾	



Containment level	H2 (covers H1, N1, T3, T2 and T1)
Working width	W5 (covers W6, W7 and W8)
Impact severity level	ASI B

Product features & Advantages

- Narrow curve radius due to short element length of 4 m
- Efficient solution for crossovers in the central reservation
- Easy and quick opening of the continuous element chain



Permanent precast concrete vehicle restraint systems are used for long lasting protection on the central reservation and along the verge. Breakthroughs onto the opposite carriageway are prevented and vehicle deviating from the road are retained or re-directed. The system is ideal for temporary crossovers in the central reservation.

The integrated, innovative coupling does not contain any loose parts. An unauthorized removal of pieces is prevented and protects fully against vandalism. Additionally, the installation speed is increased as well. The easy installation, which does not depend on weather conditions, reduces the disruptions of the traffic flow.

Thanks to the interlocking coupling, there are no loose parts, which prevent unauthorized removal of pieces and protects fully against vandalism.

¹⁾ based on a modification in accordance to EN1317-5

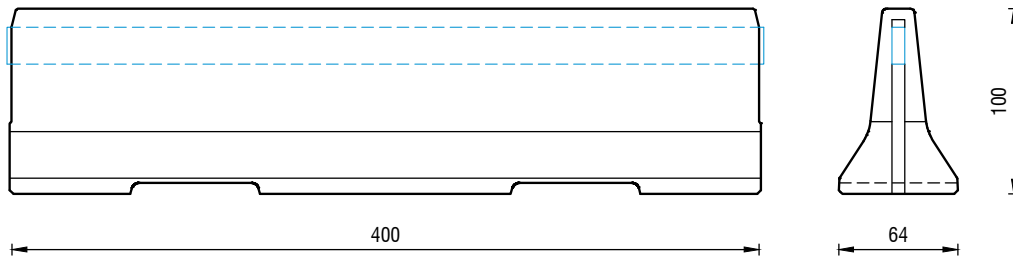
REBLOC 100_4

Standard element



tested according to EN1317-1/2¹⁾

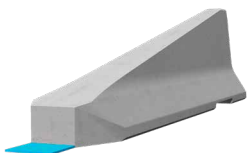
Technical data



all dimensions in cm

Containment level	H2
Working width	W5
Impact severity level	ASI B
Vehicle intrusion	VI5
Installation	free standing on asphalt/concrete
Terminal elements	required; REBLOC 100_4T (4 x M24 adhesive anchor)
Dimensions L x W x H in cm	400 x 64 x 100 cm
Weight/element	3.000 kg
Elements/truck (24 t)	8 elements
Minimum installation length	64 m (not including terminal elements)
Curve radius	$r \geq 53$ m
Coupling/exposed steel parts	fully integrated, exposed parts hot-dip galvanized
CE certification	✓

System element - combinable



Terminal element
REBLOC 100_4T
(inclination 1:5)

¹⁾ based on a modification in accordance to EN1317-5