

REBLOC 80H_8

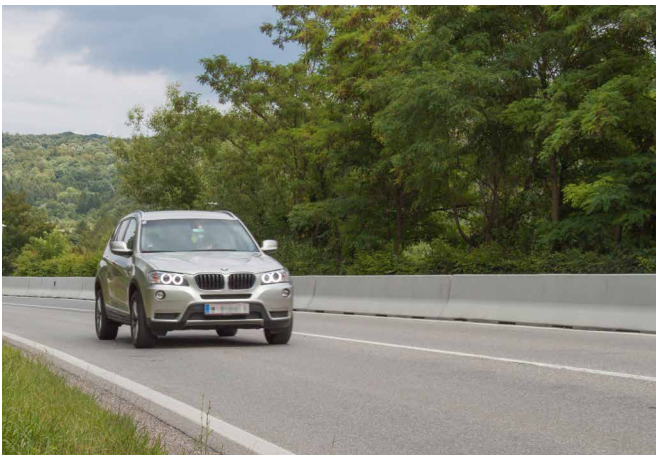
Standard element



tested according to EN1317-1/2

Application
Permanent system

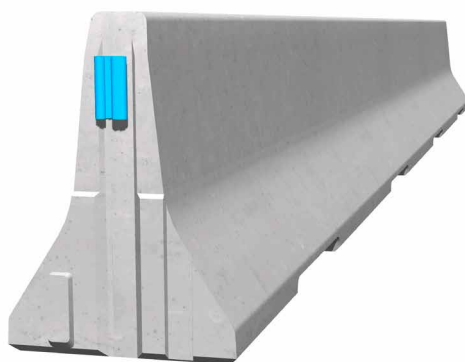
Installation
Free standing



Containment level **H1** (covers N1, T3, T2 and T1)
 Working width **W4** (covers W5, W6, W7 and W8)
 Impact severity level **ASI B**

Product features & Advantages

- Different fields of application
- Fully vandal proof due to integrated coupling
- Very economic system for containment level H1



Permanent precast concrete vehicle restraint systems are used for long lasting protection on the central reservation and along the verge. Vehicles deviating from the road are retained or redirected and prevent a dangerous breakthrough onto the opposite carriageway. As a result road users and persons as well as objects at the roadside are well protected.

The integrated, innovative coupling together with a full-length steel tension bar and an ingeniously-designed reinforcement system ensure high security and practicality. The single elements are connected to a strong chain, which safely dissipates the energy caused by vehicle impact.

Thanks to the interlocking construction, there are no loose parts, which prevent unauthorized removal of pieces and protects fully against vandalism.

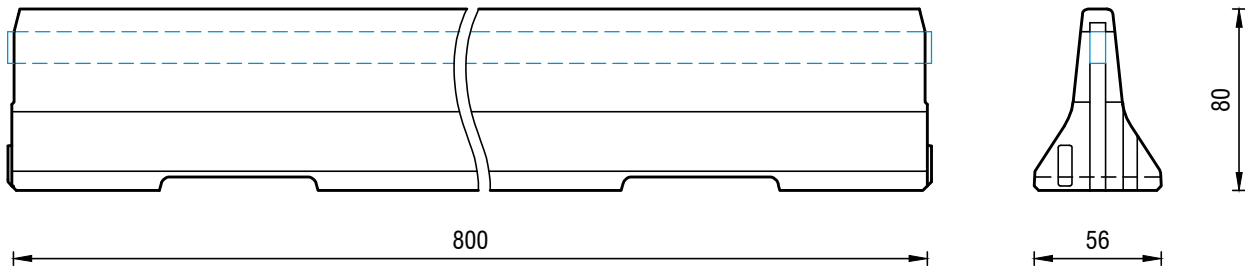
REBLOC 80H_8

Standard element



tested according to EN1317-1/2

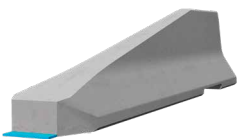
Technical data



all dimensions in cm

Containment level	H1
Working width	W4
Impact severity level	ASI B
Vehicle intrusion	VI4
Installation	free standing on asphalt/concrete
Terminal elements	required; REBLOC 80H_4T (2 x screwbolts Ø 20/200 mm)
Dimensions L x W x H in cm	800 x 56 x 80 cm
Weight/element	4.000 kg
Elements/truck (24 t)	6 elements
Minimum installation length	80 m (not including terminal elements)
Curve radius	$r \geq 225$ m, smaller radii in combination with REBLOC 80H_4 and REBLOC 80H_2
Coupling/exposed steel parts	fully integrated, exposed parts hot-dip galvanized
CE certification	✓

System elements - combinable



Terminal element
REBLOC 80H_4T
(inclination 1:5)