

# REBLOC 80XA\_8\_6A

Standard element

Application  
**Permanent system**

Installation  
**Anchored**

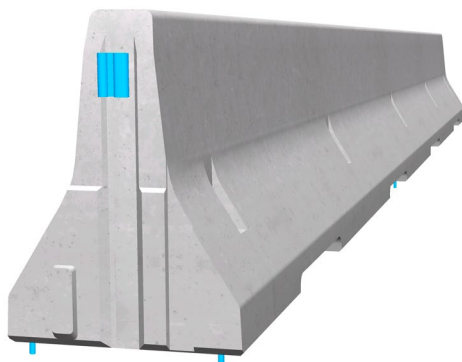
**H2** | **W2**  
tested according to EN1317-1/2<sup>1)</sup>



Containment level **H2** (covers H1, N1, T3, T2 and T1)  
Working width **W2** (covers W3, W4, W5, W6, W7 and W8)  
Impact severity level **ASI B**

## Product features & Advantages

- Anchoring depth only 12 cm to avoid protrusion of bridge sealing
- Symmetric, double-sided effective system for installation in central reservation
- Easy and quick anchorage in concrete



The anchored system with minimum working width is ideal for the application in the central reservation of bridges and for the protection of bridge piers.

The reliable restraint function is achieved by the tension bar in combination with six anchors per element. The integrated coupling system connects the individual elements to form a continuous and strong chain, which safely dissipates the energy caused by vehicle impact.

A system related dilatation for bridge expansion joints was installed in the first third of the installation length. This evens out natural movements of the construction due to temperature fluctuations and transmits longitudinal forces.

The system is also available as single-sided effective REBLOC 80XA\_8\_3A with 3 anchorages on the verge of the road.

<sup>1)</sup> Based on a modification in accordance to EN 1317

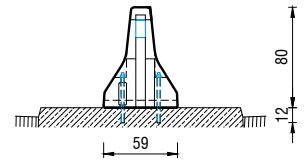
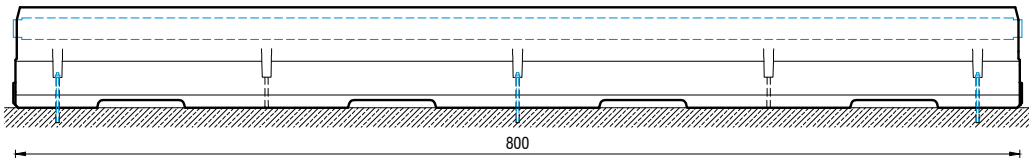
# REBLOC 80XA\_8\_6A

Standard element



tested according to EN1317-1/2<sup>1)</sup>

## Technical data



all dimensions in cm

Containment level	H2
Working width	W2
Impact severity level	ASI B
Vehicle intrusion	VI2
Installation	anchored (6 x M16 adhesive anchors in concrete per element)
Terminal elements	not necessary, optional available
Dimensions L x W x H in cm	800 x 59 x 80 cm
Weight/element	4.800 kg
Elements/truck (24 t)	5 elements
Minimum installation length	56 m
Curve radius	$r \geq 250$ m, smaller radii on request
Coupling/exposed steel parts	fully integrated, exposed parts hot-dip galvanized
CE certification	✓

<sup>1)</sup> Based on a modification in accordance to EN 1317